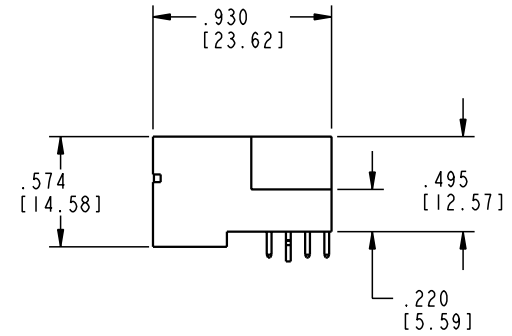
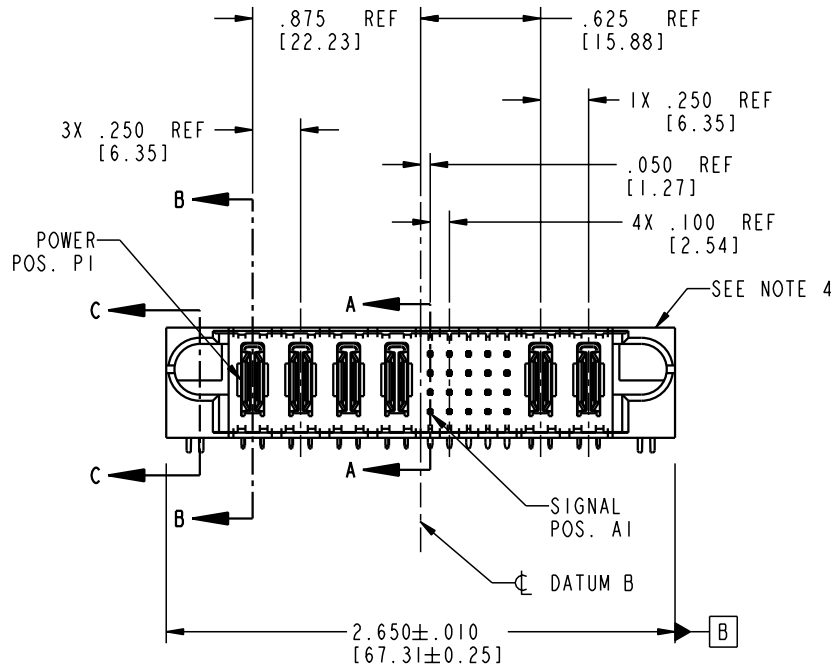
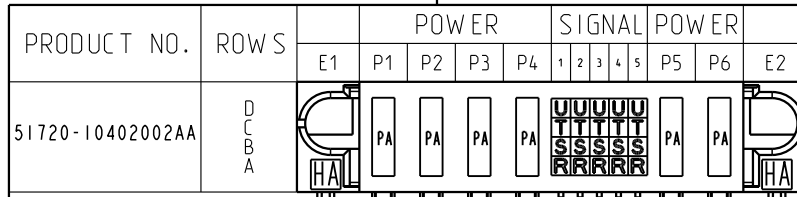


Tous droits strictement réservés. Reproduction ou communication o des liens interdite sous quelque forme que ce soit sans autorisation écrite du propriétaire. Propriete de c FCI. Droits de reproduction FCI.

**FCI**

All rights strictly reserved. Reproduction or issue to third parties in any form whenever is not permitted without written authority from the proprietor. Property of FCI. Copyright FCI.



CODE	DIM "M" MATING LENGTH	CONTACT TYPE
R	.270 [6.86]	SIGNAL
S	.270 [6.86]	SIGNAL
T	.270 [6.86]	SIGNAL
U	.270 [6.86]	SIGNAL
PA	N/A [N/A]	POWER
HA	N/A [N/A]	HOLD-DOWN

mat'l code				SEE NOTE 2		tolerances unless otherwise specified		CUSTOMER		 www.fciconnect.com	
ltr	ecn no.	dr	date	linear	.XX ± .01 / 0.X ± 0.3		COPY		title		
A	V21518	TAB	09/23/02		.XXX ± .005 / 0.XX ± 0.13		projection		4P + 20S + 2P		
					.XXX ± .0020 / 0.XX ± 0.051				R/A SOLDER HEADER		
				angles	0° ± 2°		INCH/MM		product family		code
				dr	T. BRUNGARD	09/23/02	scale		PwrBlade		213
				enr	M. MOSTOLLER	09/23/02	1 : 1		size		sheet
				chr	M. MOSTOLLER	09/23/02			A		1 of 4
				appd	M. MOSTOLLER	09/23/02			51720-10402002AA		
sheet index	revision sheet	A	A	A	A				cage code		
		1	2	3	4				22526		

Pro/E

3

cage code 22526

4

PDM: Rev:A

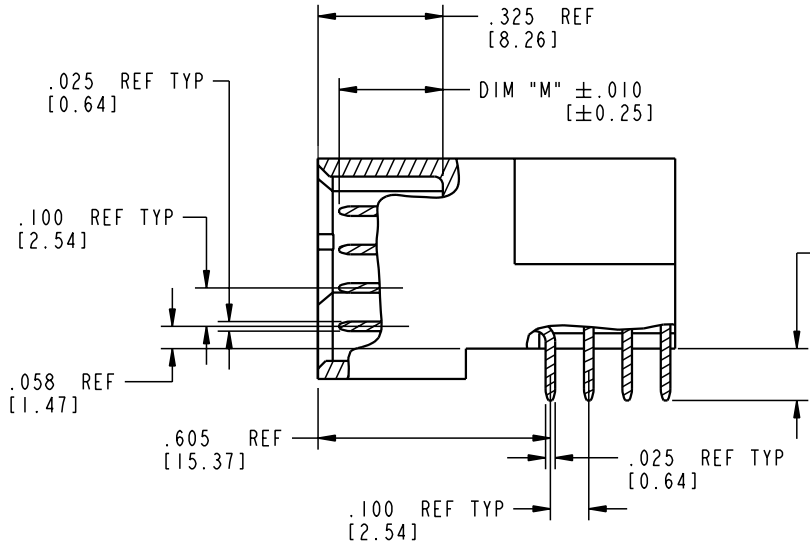
STATUS: Released

Printed: Aug 12, 2007

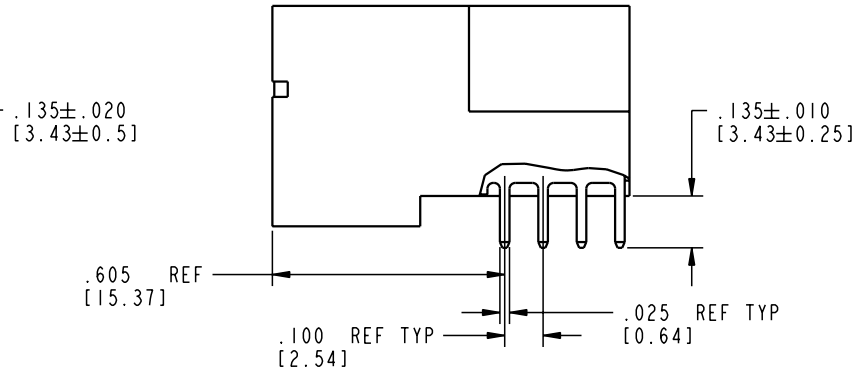
Tous droits strictement réservés. Reproduction ou communication o des tiers interdite sous quelque forme que ce soit sans autorisation écrite du propriétaire. Propriété de c FCI. Droits de reproduction FCI.

All rights strictly reserved. Reproduction or issue to third parties in any form whatever is not permitted without written authority from the proprietor. Property of FCI. Copyright FCI.

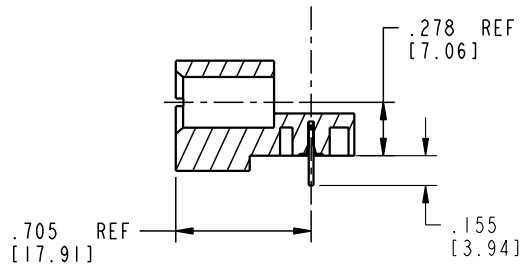
PRODUCT NUMBER  
51720-10402002AA



BROKEN-OUT SECTION A-A  
SCALE 2:1



BROKEN-OUT SECTION B-B  
SCALE 2:1



SECTION C-C

mat'l code				SEE NOTE 2		tolerances unless otherwise specified		CUSTOMER		 www.fciconnect.com	
ltr	ecn no.	dr	date	linear	.XX±.01/0.X±0.3		COPY		title		
A					.XXX±.005/0.XX±0.13		projection		4P + 20S + 2P		
					.XXX±.0020/0.XXX±0.051				R/A SOLDER HEADER		
				angles	° ± °		INCH/MM		product family		code
				dr	T. BRUNGARD	09/23/02	scale		PwrBlade		213
				engr	M. MOSTOLLER	09/23/02	1:1		size		sheet
				chr	M. MOSTOLLER	09/23/02			A		2 of 4
				appd	M. MOSTOLLER	09/23/02			51720-10402002AA		
sheet index		revision sheet									

Pro/E

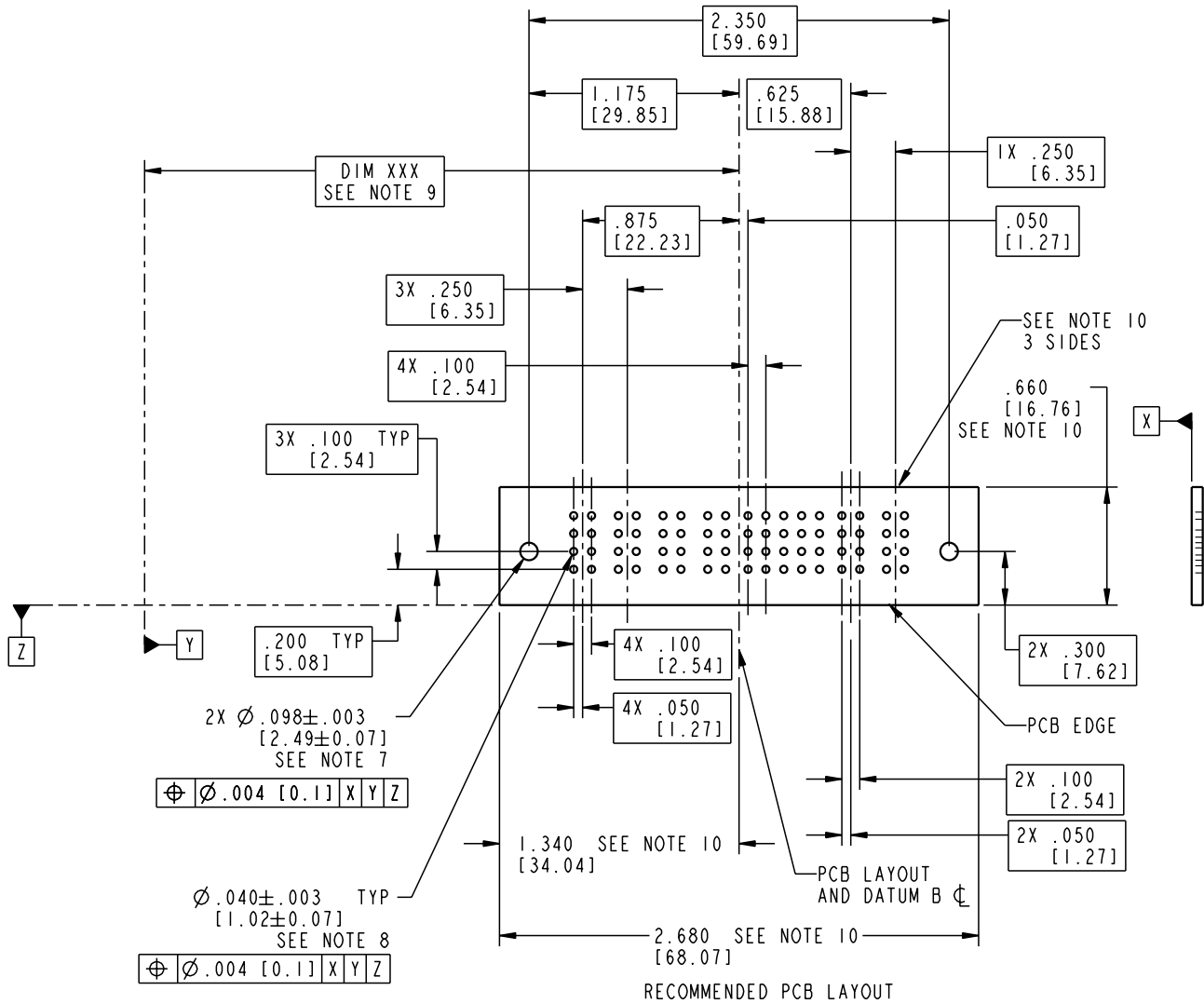
cage code 22526

Tous droits strictement réservés. Reproduction ou communication o des tiers interdite sous quelque forme que ce soit sans autorisation écrite du propriétaire. Propriété de c FCI. Droits de reproduction FCI.

**FCI**

All rights strictly reserved. Reproduction or issue to third parties in any form, whatever is not permitted without written authority from the proprietor. Property of FCI. Copyright FCI.

PRODUCT NUMBER  
51720-10402002AA



mat'l code				SEE NOTE 2		tolerances unless otherwise specified		CUSTOMER		 www.fciconnect.com	
ltr	ecr no.	dr	date	linear	.XX±.01/0.X±0.3		COPY		title		
A					.XXX±.005/0.XX±0.13		projection		4P + 20S + 2P		
					.XXX±.0020/0.XX±0.051				R/A SOLDER HEADER		
				angles	0° ± 2°		INCH/MM		product family		code
				dr	T. BRUNGARD	09/23/02	scale		PwrBlade		213
				enr	M. MOSTOLLER	09/23/02	1:1		size		sheet
				chr	M. MOSTOLLER	09/23/02			A		3 of 4
				appd	M. MOSTOLLER	09/23/02			51720-10402002AA		
sheet index	revision sheet										

cage code 22526

Pro/E

PDM: Rev:A

STATUS: Released

Printed: Aug 12, 2007

Tous droits strictement réservés. Reproduction ou communication o des tiers interdite sous quelque forme que ce soit sans autorisation écrite du propriétaire. Propriete de c FCI. Droits de reproduction FCI.

**A**  
**FCI**

All rights strictly reserved. Reproduction or issue to third parties in any form, whatever is not permitted without written authority from the proprietor. Property of FCI. Copyright FCI.

**B**

PRODUCT NUMBER  
51720-10402002AA

NOTES:

1. DIMENSIONS AND TOLERANCES ARE IN ACCORDANCE WITH ASME Y14.5M, 1994 UNLESS OTHERWISE SPECIFIED.

CONNECTOR NOTES:

- 2. HOUSING MATERIAL: UL 94 V-0 GLASS FILLED  
HIGH-TEMP THERMOPLASTIC  
POWER CONTACT MATERIAL: COPPER ALLOY  
SIGNAL PIN MATERIAL: COPPER ALLOY
- 3. PLATING:  
SIGNAL PINS: 30u"/0.76um Au OVER 50u"/1.27um Ni  
POWER CONTACTS: 50u"/1.27um Ni UNDER ALL  
WITH 30u"/0.76um Au ON CONTACT AREA  
AND SnPb ON PCB INTERFACE

4. MANUFACTURER'S NAME, P/N, AND DATE CODE TO APPEAR ON THIS SURFACE.

5. PRODUCT SPECIFICATION GS-12-149.  
APPLICATION SPECIFICATION BUS-20-067.

PCB NOTES:

- 6. ALL HOLE DIAMETERS ARE FINISHED HOLE SIZE.
- 7. MOUNTING HOLES, WHERE APPLICABLE, ARE UNPLATED.
- 8.  $\varnothing .0453 \pm .0010$  [1.151  $\pm$  0.025] DRILLED HOLES PLATED WITH  
.0003 [0.008] MIN SnPb OVER .001 [0.03]  
TO .003 [0.08] Cu PLATING TO ACHIEVE  
 $\varnothing .040 \pm .003$  [1.02  $\pm$  .07] HOLE.
- 9. "DIM XXX" TO BE DETERMINED BY THE CUSTOMER.
- 10. CONNECTOR KEEP-OUT ZONE.

mat'l code				SEE NOTE 2		tolerances unless otherwise specified		CUSTOMER		<b>A</b> <b>FCI</b> www.fciconnect.com	
ltr	ecr no.	dr	date	linear	.XX±.01/0.X±0.3		COPY		title 4P + 20S + 2P R/A SOLDER HEADER		
A					.XXX±.005/0.XX±0.13		projection				
					.XXX±.0020/0.XXX±0.051						
				angles	0° + 2°		INCH/MM		product family		code
				dr	T. BRUNGARD	09/23/02	scale		PwrBlade		213
				enr	M. MOSTOLLER	09/23/02	1:1		size		sheet
				chr	M. MOSTOLLER	09/23/02			A		4 of 4
				appd	M. MOSTOLLER	09/23/02			51720-10402002AA		
sheet index		revision sheet									

**A**

**B**

1 | 2

3 |

4

1 | 2

Pro/E

3 |

cage code 22526

4